

Customer :

customer

Customer part :

customer part

Comment :

Comment

S1=6.98

S2=8.84

Tmax=466

Tp S2=505.0

PI=0.44

HI=112

Sample =1686.60

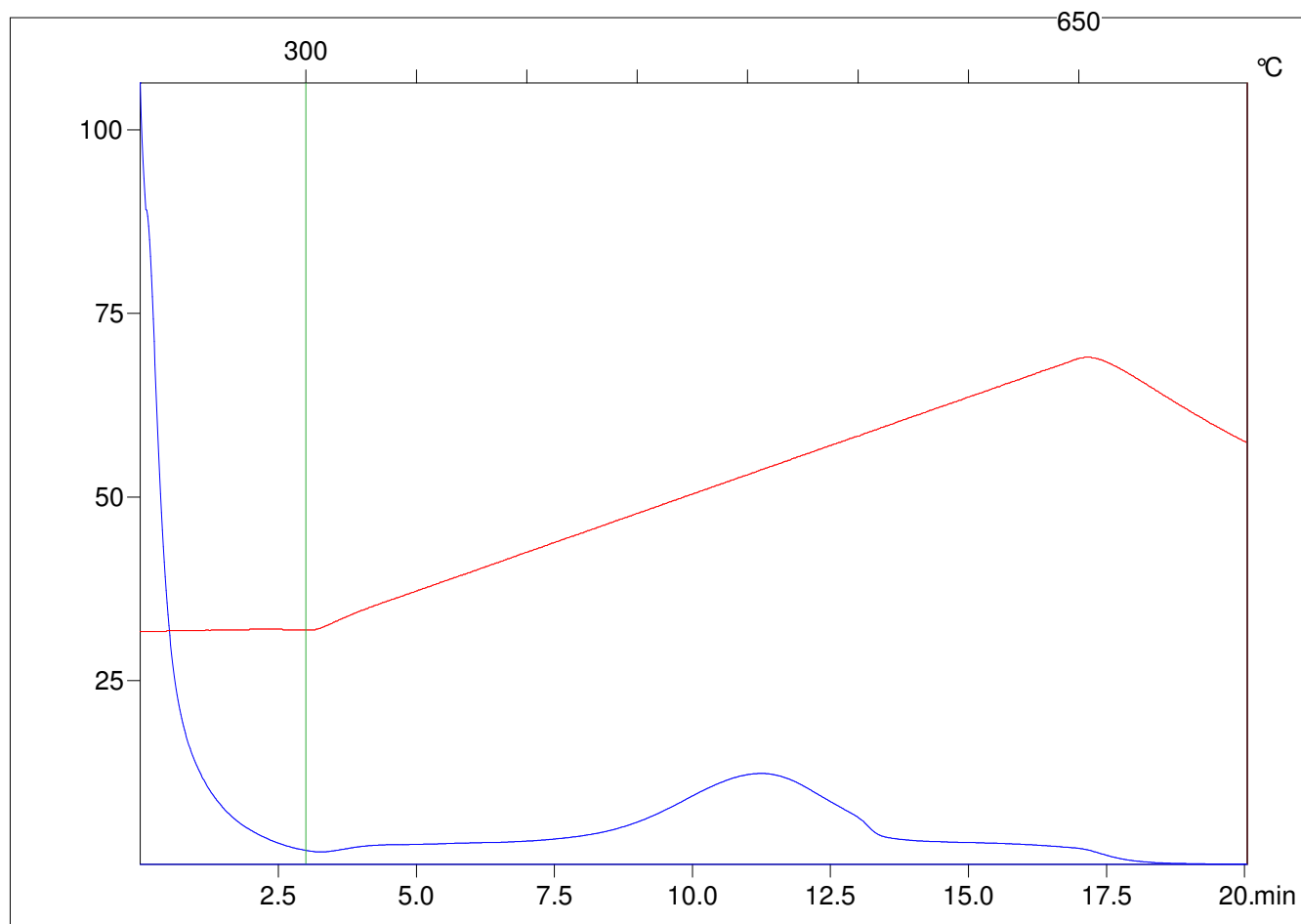
Method =Bulk Rock

Cycle=Basic

KFID(10*9)=1444

Qty =69.9

TOC=7.86



C:\VINC\PK1_1792\PK049.R00 : FID pyrolysis graphic

State

Pyro Status

Oxi Status